



SUMMARY REPORT

DHL FROZEN SOLUTION SMALL (-20°C)

Dry Ice Plates

SBS Summer & Static +30°C Ambient Test Profiles

Abstract

The following Summary Report demonstrates how the system is conditioned, packed and performs when tested against the SBS Summer & Static +30°C ambient test profiles.

REPORT AUTHOR

Fraser MacDonald
Packaging Engineer

Signature:

Date: 20NOV2018

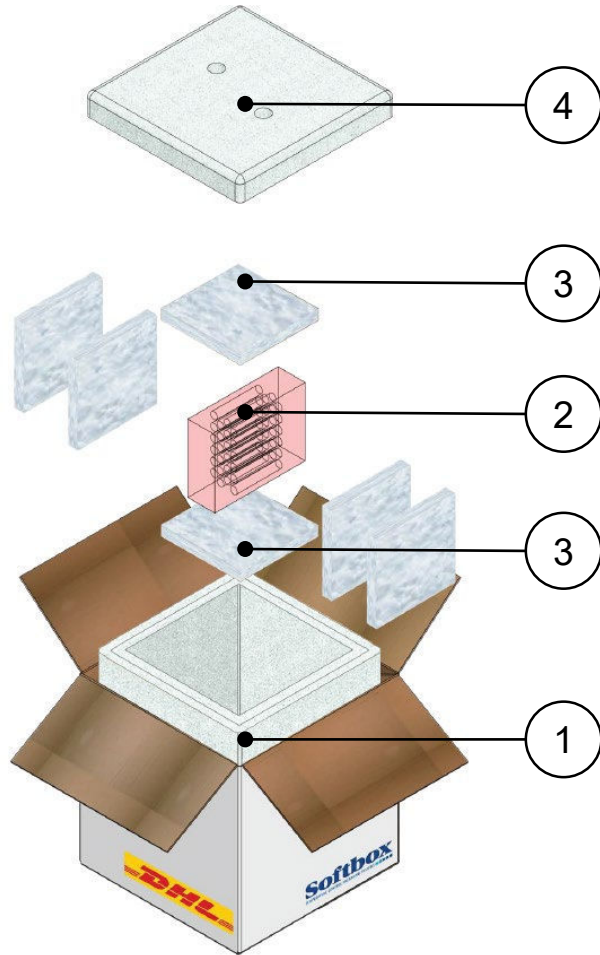
REPORT APPROVER

Gavin Hill
Senior Project Engineer

Signature:

Date: 20NOV2018

SYSTEM DIAGRAM



SYSTEM SPECIFICATION

Item	Components	Quantity	Weights and Dimensions	
1	DHL Frozen Solution Small Base	1	Tare Weight	5.2kg
2	Test Product Load	1	Volumetric Weight	6kg
3	6 x Dry Ice Plates	4.218kg	Product Dimensions L x W x H	95x95x135mm
4	DHL Frozen Solution Small Lid	1	Shipper Dimensions L x W x H	310x310x320mm

Freezing Media

4.218kg of dry ice (6 plates). Approximate plate weight - 750g.



DHL FROZEN SOLUTION SMALL SYSTEM PACKING INSTRUCTION

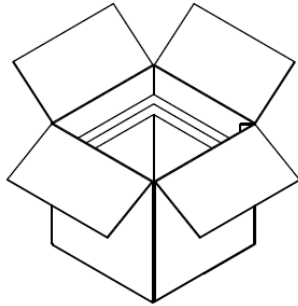


Fig.1
Remove the Frozen Solution lid and prepare to pack.

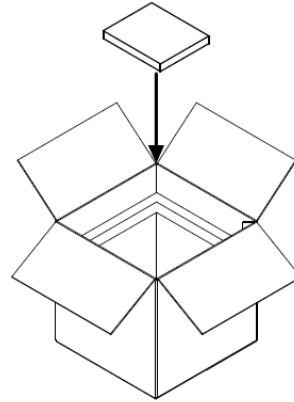


Fig.2
Place 1 x dry ice plate in the base of the Frozen Solution.

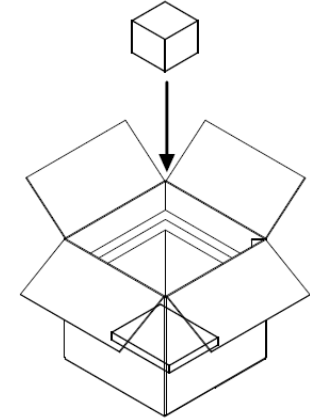


Fig.3
Place product load on the dry ice plate.

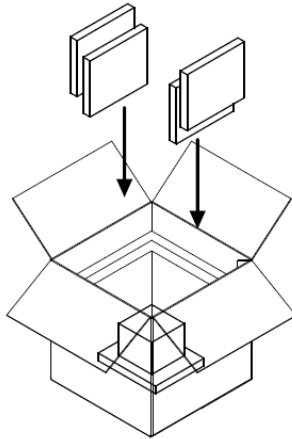


Fig.4
Place 4 x dry ice plates around the product load.

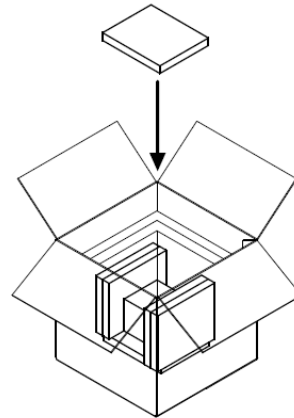


Fig.5
Place 1 x dry ice plate on the product load.

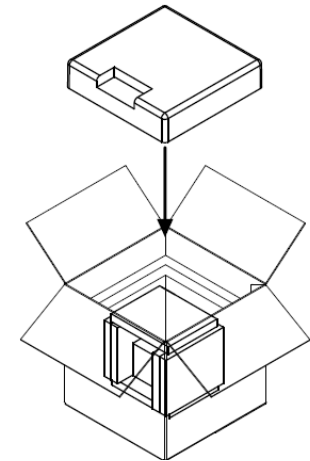
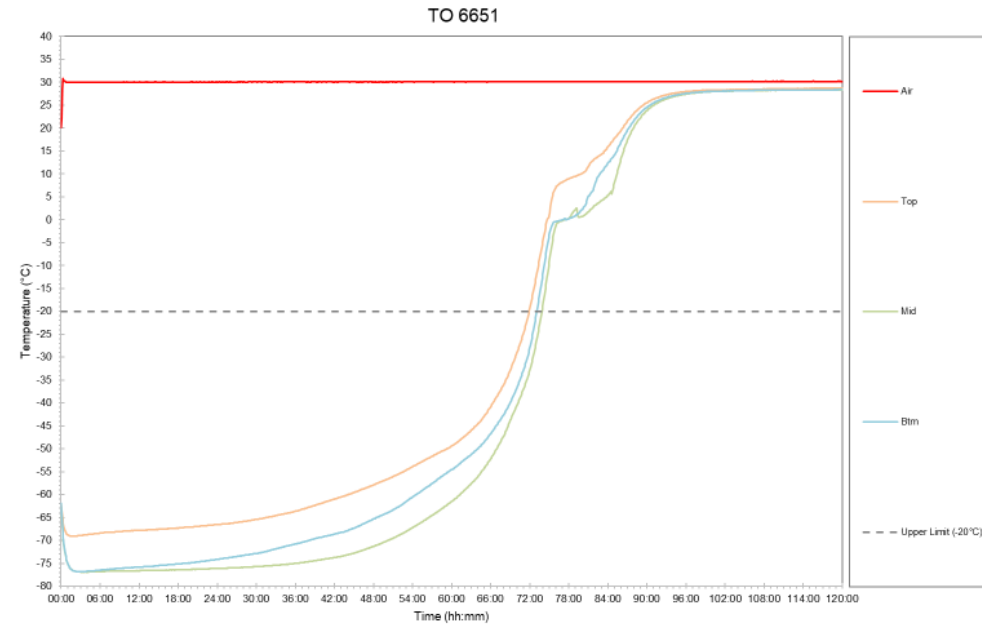
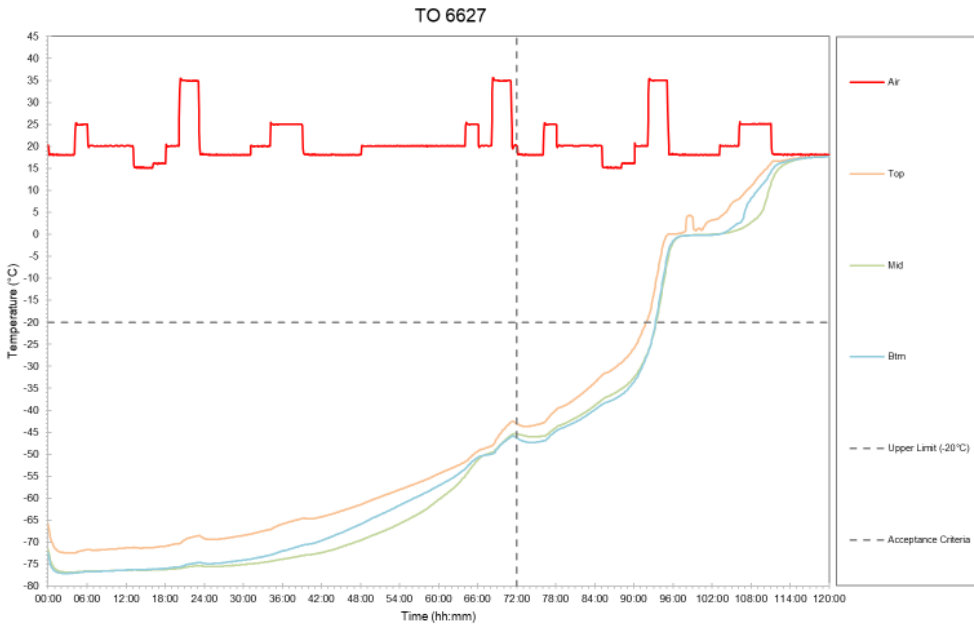


Fig.6
Place the lid on the Frozen Solution and secure outer carton with tape.



DHL FROZEN SOLUTION SMALL SYSTEM TEST RESULTS – SBS SUMMER & STATIC +30°C



Test Profile	Product Load	Duration Achieved	Minimum Temperature : °C Maximum Temperature : °C
SBS Summer TO 6627	Full Load	91:55 hh:mm	Minimum Temperature : -77.1°C Maximum Temperature : +17.8°C
Static +30°C TO 6651	Full Load	71:55 hh:mm	Minimum Temperature : -76.9°C Maximum Temperature : +28.8°C