



# SUMMARY REPORT

## DHL FROZEN SOLUTION MEDIUM (-20°C)

### Dry Ice Plates

## SBS Summer & Static +30°C Ambient Test Profiles

#### Abstract

The following Summary Report demonstrates how the system is conditioned, packed and performs when tested against the SBS Summer & Static +30°C ambient test profiles.

#### REPORT AUTHOR

Fraser MacDonald  
Packaging Engineer

Signature:

Date: 20NOV2018

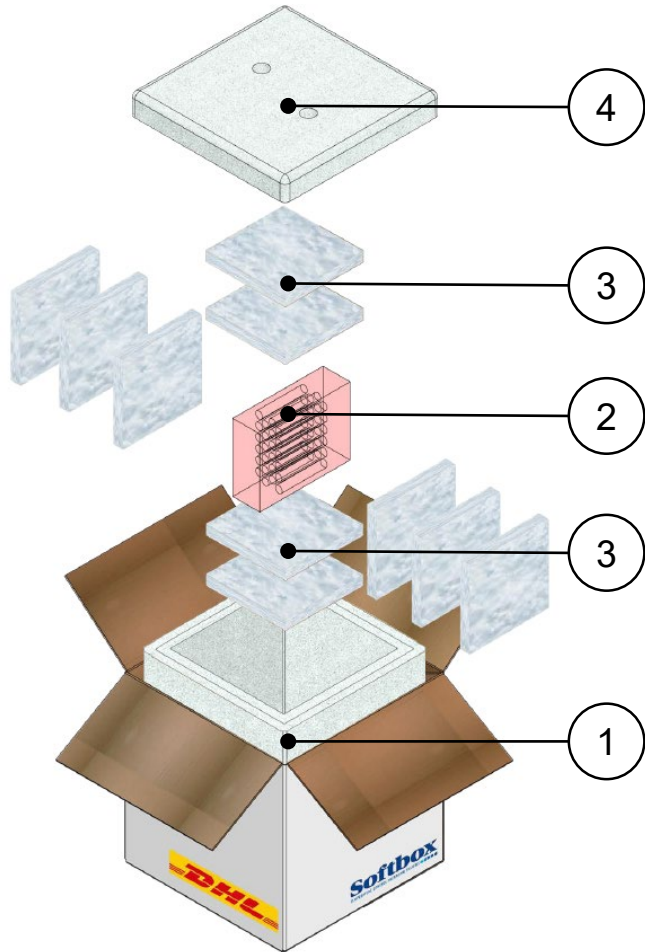
#### REPORT APPROVER

Gavin Hill  
Senior Project Engineer

Signature:

Date: 20NOV2018

**SYSTEM DIAGRAM**



**SYSTEM SPECIFICATION**

Item	Components	Quantity	Weights and Dimensions	
1	DHL Frozen Solution Medium Base	1	Tare Weight	7.4kg
2	Test Product Load	1	Volumetric Weight	9kg
3	10 x Dry Ice Plates	6.346kg	Product Dimensions L x W x H	95x95x135mm
4	DHL Frozen Solution Medium Lid	1	Shipper Dimensions L x W x H	348x348x364mm

**Freezing Media**

6.346kg of dry ice (10 plates). Approximate plate weight - 750g.



# DHL FROZEN SOLUTION MEDIUM SYSTEM PACKING INSTRUCTION

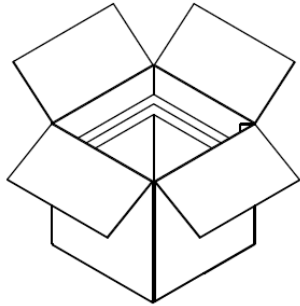


Fig.1  
Remove the Frozen Solution lid and prepare to pack.

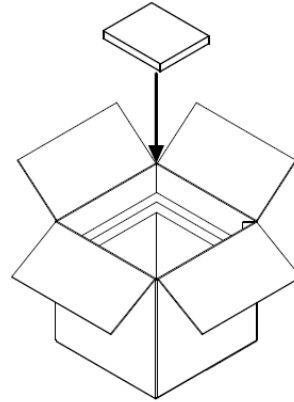


Fig.2  
Place 2 x dry ice plates in the base of the Frozen Solution.

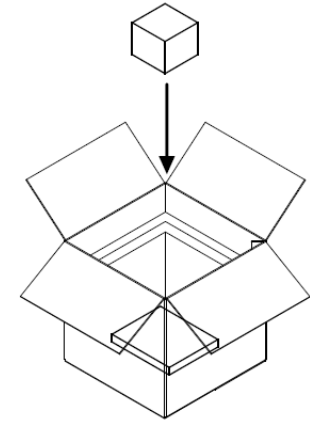


Fig.3  
Place product load on the dry ice plates.

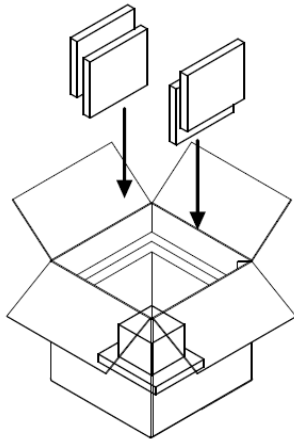


Fig.4  
Place 6 x dry ice plates around the product load.

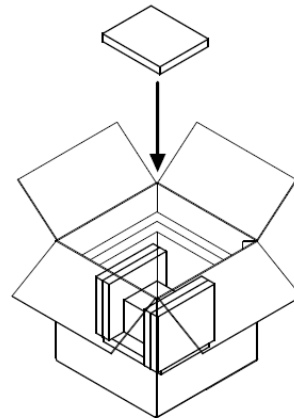


Fig.5  
Place 2 x dry ice plates on the product load.

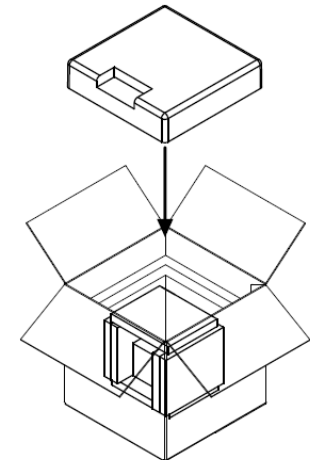
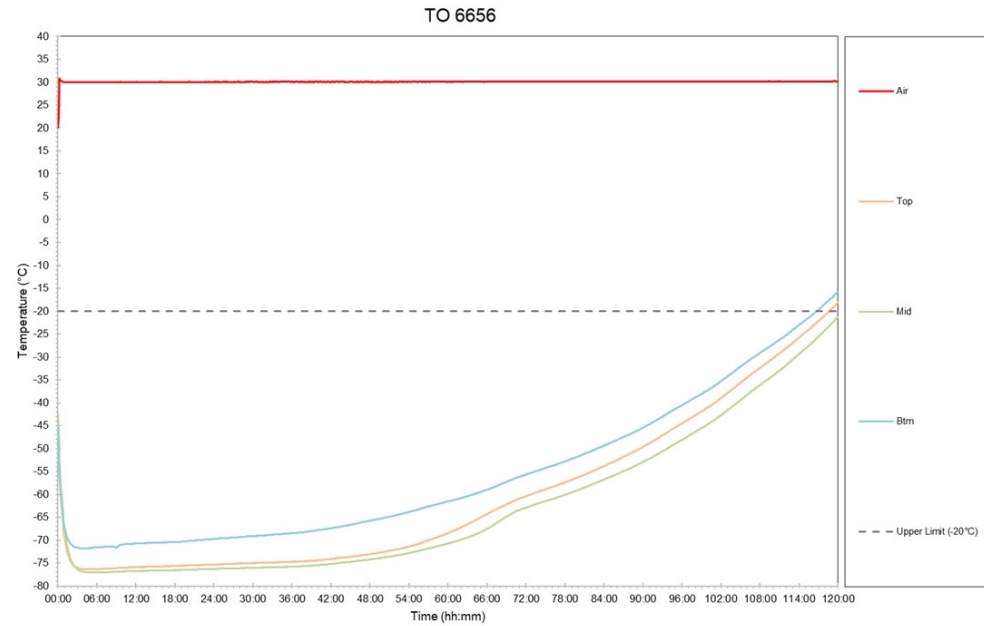
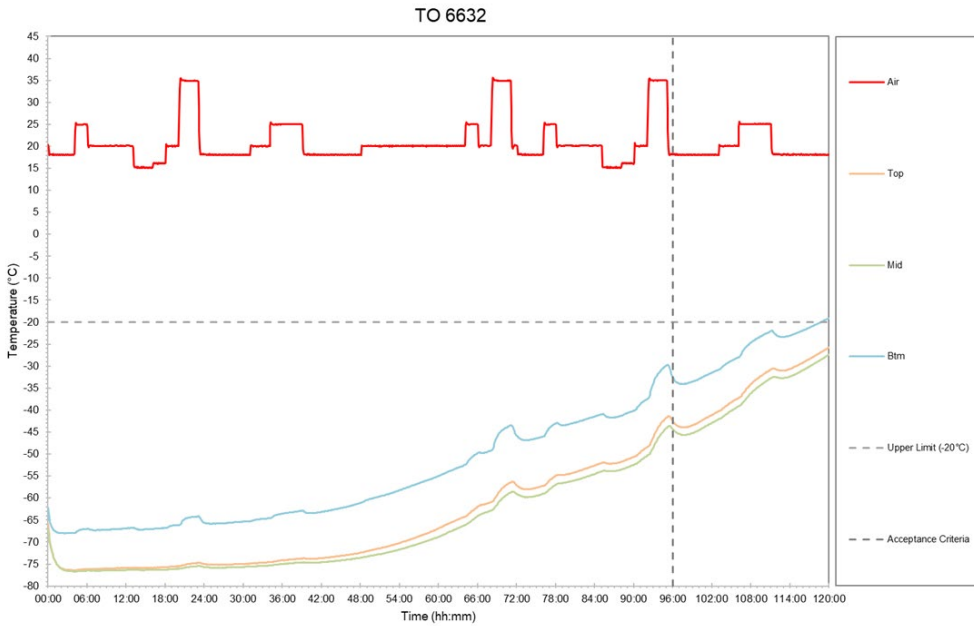


Fig.6  
Place the lid on the Frozen Solution and secure outer carton with tape.



# DHL FROZEN SOLUTION MEDIUM SYSTEM TEST RESULTS – SBS SUMMER & STATIC +30°C



Test Profile	Product Load	Duration Achieved	Minimum Temperature : °C Maximum Temperature : °C
SBS Summer TO 6632	Full Load	118:50 hh:mm	Minimum Temperature : -76.7°C Maximum Temperature : -19.1°C
Static +30°C TO 6656	Full Load	116:45 hh:mm	Minimum Temperature : -77.1°C Maximum Temperature : -15.7°C