



SUMMARY REPORT

DHL FROZEN SOLUTION MEDIUM (-20°C)

Dry Ice Pellets

SBS Summer & Static +30°C Ambient Test Profiles

Abstract

The following Summary Report demonstrates how the system is conditioned, packed and performs when tested against the SBS Summer & Static +30°C ambient test profiles.

REPORT AUTHOR

Fraser MacDonald
Packaging Engineer

Signature:

Date: 20NOV2018

REPORT APPROVER

Gavin Hill
Senior Project Engineer

Signature:

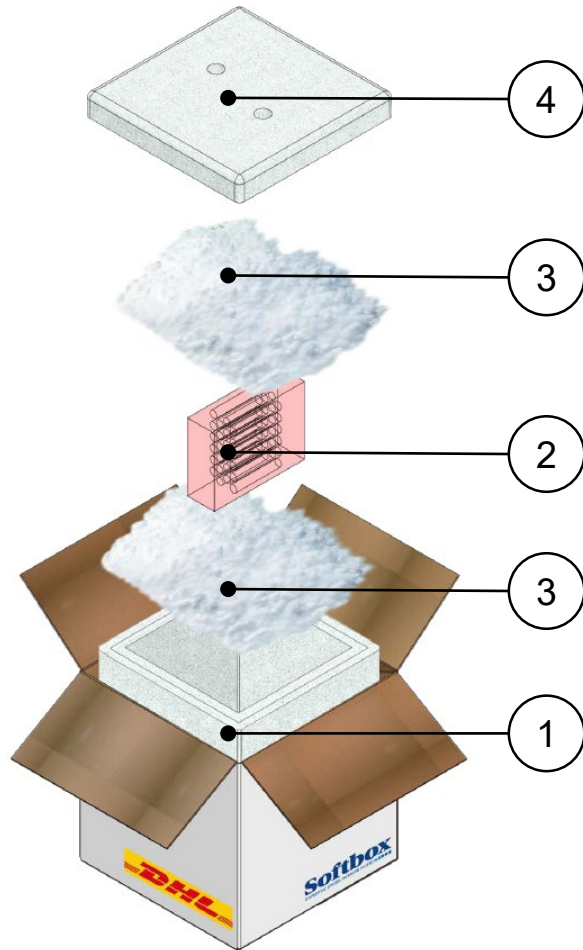
Date: 20NOV2018



DHL FROZEN SOLUTION MEDIUM SYSTEM DIAGRAM & SYSTEM SPECIFICATION



SYSTEM DIAGRAM



SYSTEM SPECIFICATION

Item	Components	Quantity	Weights and Dimensions	
1	DHL Frozen Solution Medium Base	1	Tare Weight	7.8kg
2	Test Product Load	1	Volumetric Weight	9kg
3	Dry Ice Pellets	6.748kg	Product Dimensions L x W x H	95x95x135mm
4	DHL Frozen Solution Medium Lid	1	Shipper Dimensions L x W x H	348x348x364mm

Freezing Media

6.748kg of 16mm dry ice pellets. Approximate pellet weight – 15g.



DHL FROZEN SOLUTION MEDIUM SYSTEM PACKING INSTRUCTION

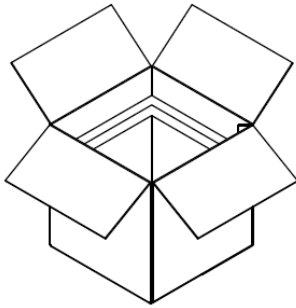


Fig.1
Remove the Frozen Solution lid and prepare to pack.

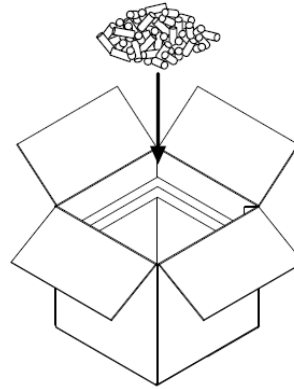


Fig.2
Place a minimum 2 pellet layer of dry ice in the base of the Frozen Solution.

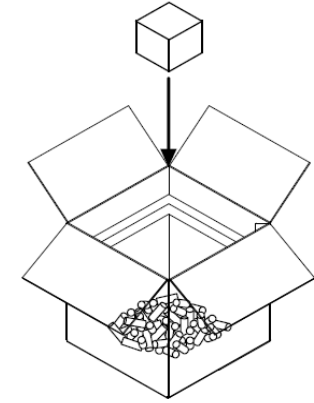


Fig.3
Place product load on the layer of dry ice pellets.

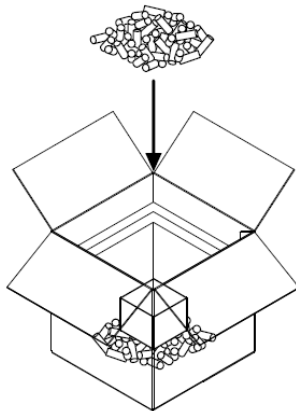


Fig.4
Place dry ice pellets around the product load.

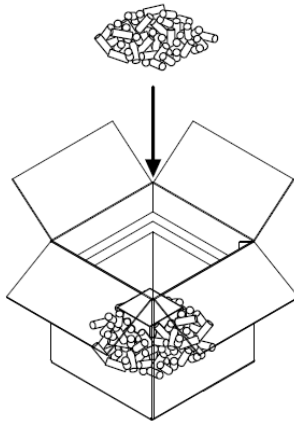


Fig.5
Place the remaining dry ice on the product load.

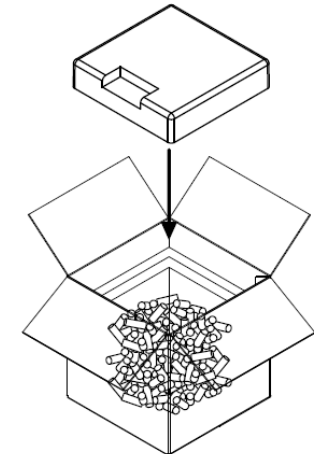


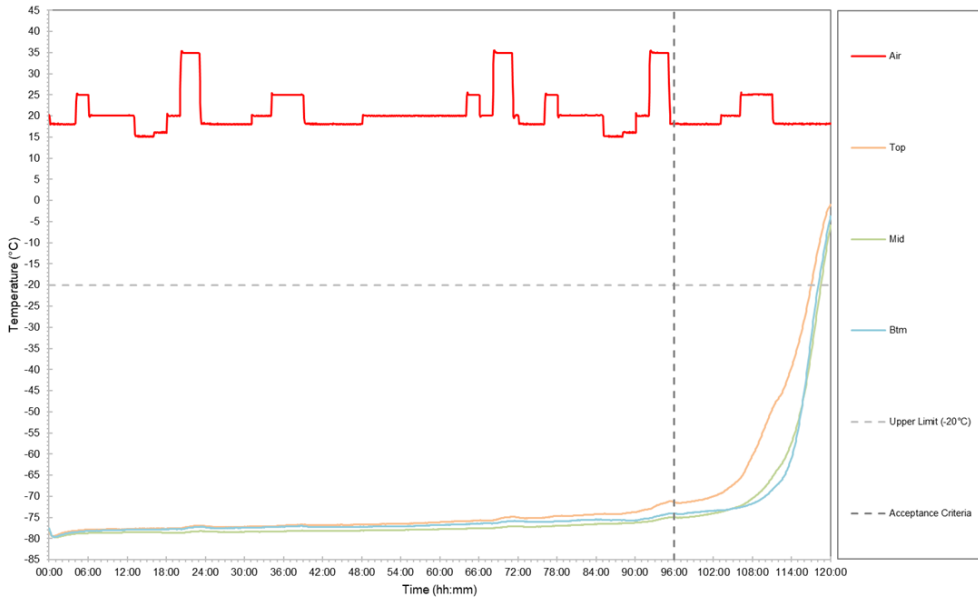
Fig.6
Place the lid on the Frozen Solution and secure outer carton with tape.



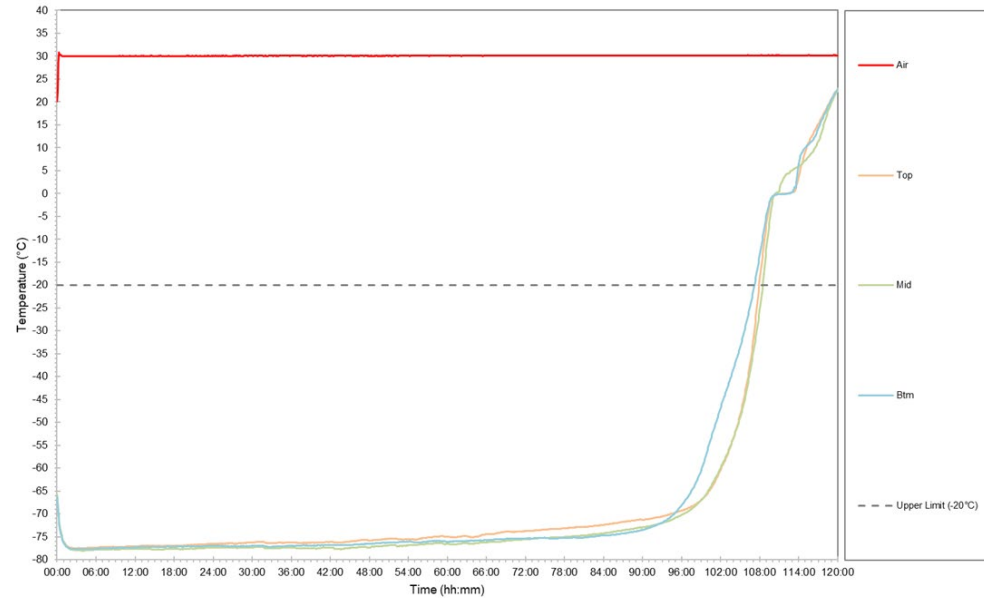
DHL FROZEN SOLUTION MEDIUM SYSTEM TEST RESULTS – SBS SUMMER & STATIC +30°C



TO 6631



TO 6655



Test Profile	Product Load	Duration Achieved	Minimum Temperature : °C Maximum Temperature : °C
SBS Summer TO 6631	Full Load	117:05 hh:mm	Minimum Temperature : -79.8°C Maximum Temperature : -1.0°C
Static +30°C TO 6655	Full Load	107:15 hh:mm	Minimum Temperature : -78.1°C Maximum Temperature : +22.9°C