



# SUMMARY REPORT

## DHL FROZEN SOLUTION LARGE (-20°C)

### Dry Ice Plates

### SBS Summer & Static +30°C Ambient Test Profiles

#### Abstract

The following Summary Report demonstrates how the system is conditioned, packed and performs when tested against the SBS Summer & Static +30°C ambient test profiles.

#### REPORT AUTHOR

Fraser MacDonald  
Packaging Engineer

Signature:

Date: 20NOV2018

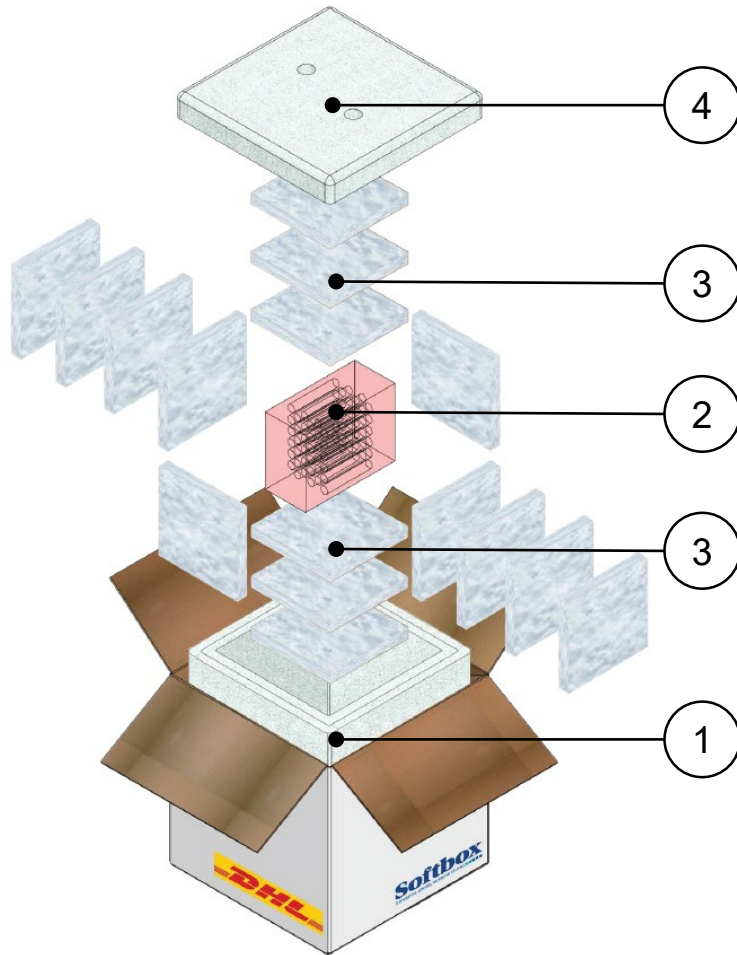
#### REPORT APPROVER

Gavin Hill  
Senior Project Engineer

Signature:

Date: 20NOV2018

## SYSTEM DIAGRAM



## SYSTEM SPECIFICATION

Item	Components	Quantity	Weights and Dimensions	
1	DHL Frozen Solution Large Base	1	Tare Weight	12.0kg
2	Test Product Load	1	Volumetric Weight	14kg
3	16 x Dry Ice Plates	9.560kg	Product Dimensions L x W x H	180x145x150mm
4	DHL Frozen Solution Large Lid	1	Shipper Dimensions L x W x H	395x395x448mm

### Freezing Media

9.560kg of dry ice (16 plates). Approximate plate weight - 750g.



# DHL FROZEN SOLUTION LARGE SYSTEM PACKING INSTRUCTION

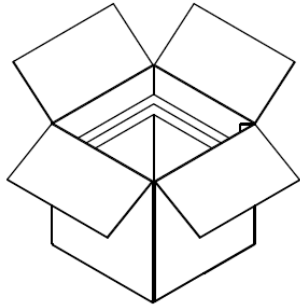


Fig.1  
Remove the Frozen Solution lid and prepare to pack.

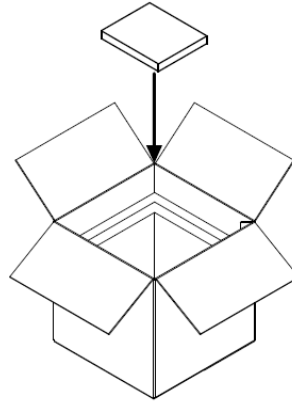


Fig.2  
Place 3 x dry ice plates in the base of the Frozen Solution.

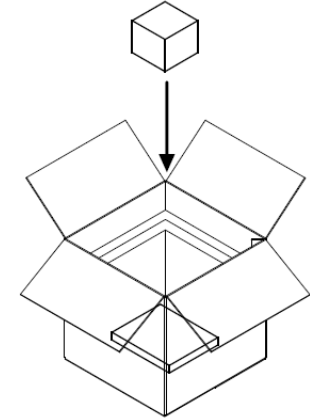


Fig.3  
Place product load on the dry ice plates.

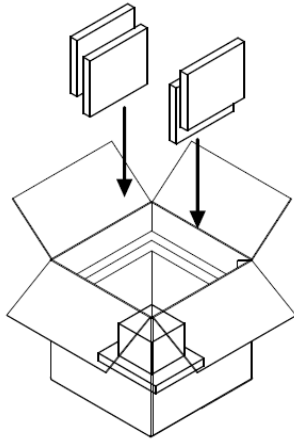


Fig.4  
Place 10 x dry ice plates around the product load.

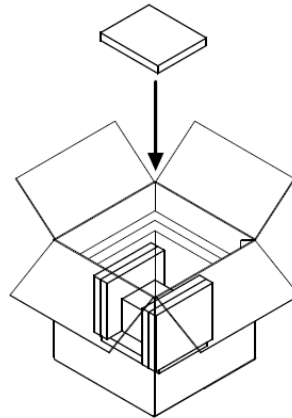


Fig.5  
Place 3 x dry ice plates on the product load.

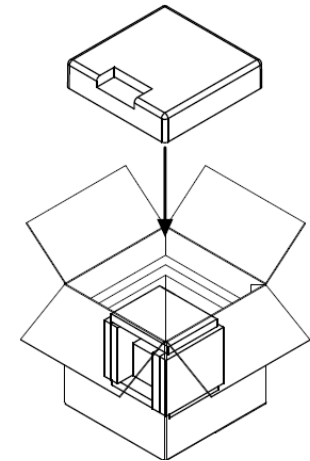


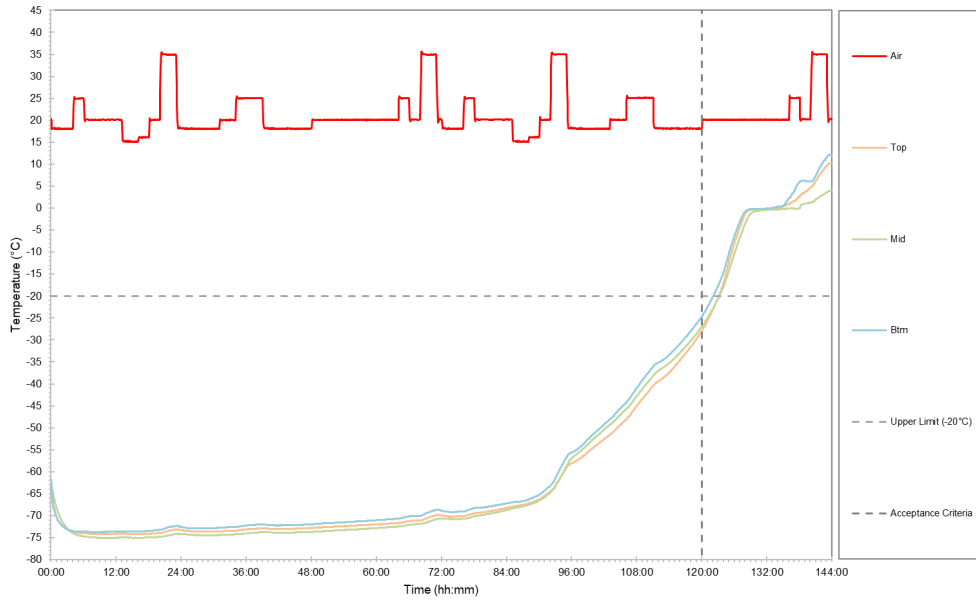
Fig.6  
Place the lid on the Frozen Solution and secure outer carton with tape.



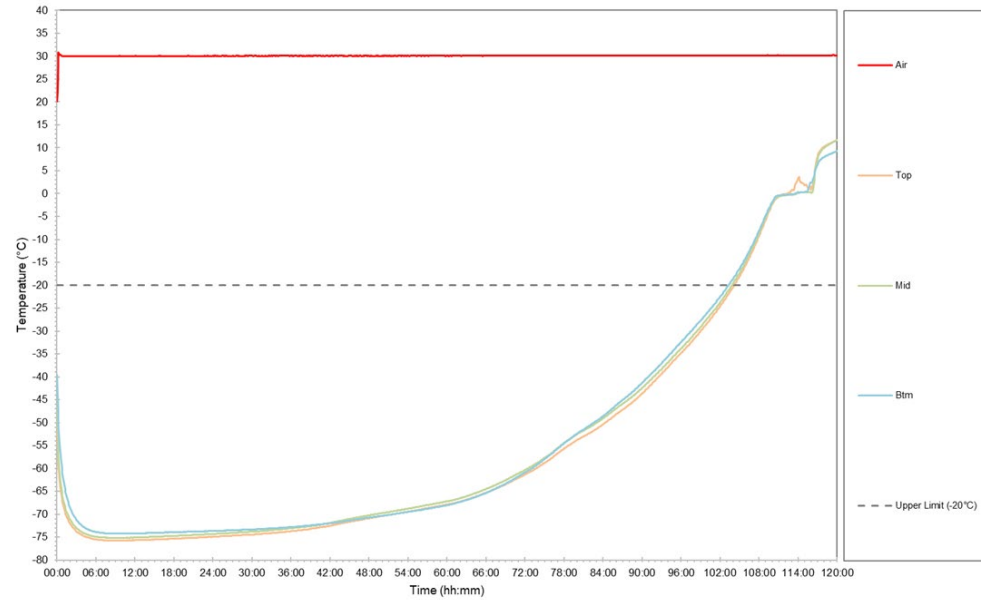
# DHL FROZEN SOLUTION LARGE SYSTEM TEST RESULTS – SBS SUMMER & STATIC +30°C



TO 6634



TO 6658



Test Profile	Product Load	Duration Achieved	Minimum Temperature : °C Maximum Temperature : °C
SBS Summer TO 6634	Full Load	122:10 hh:mm	Minimum Temperature : -75.1°C Maximum Temperature : +12.1°C
Static +30°C TO 6658	Full Load	103:20 hh:mm	Minimum Temperature : -75.8°C Maximum Temperature : +11.7°C