



SUMMARY REPORT

DHL FROZEN SOLUTION LARGE (-20°C)

Dry Ice Pellets

SBS Summer & Static +30°C Ambient Test Profiles

Abstract

The following Summary Report demonstrates how the system is conditioned, packed and performs when tested against the SBS Summer & Static +30°C ambient test profiles.

REPORT AUTHOR

Fraser MacDonald
Packaging Engineer

Signature:

Date: 20NOV2018

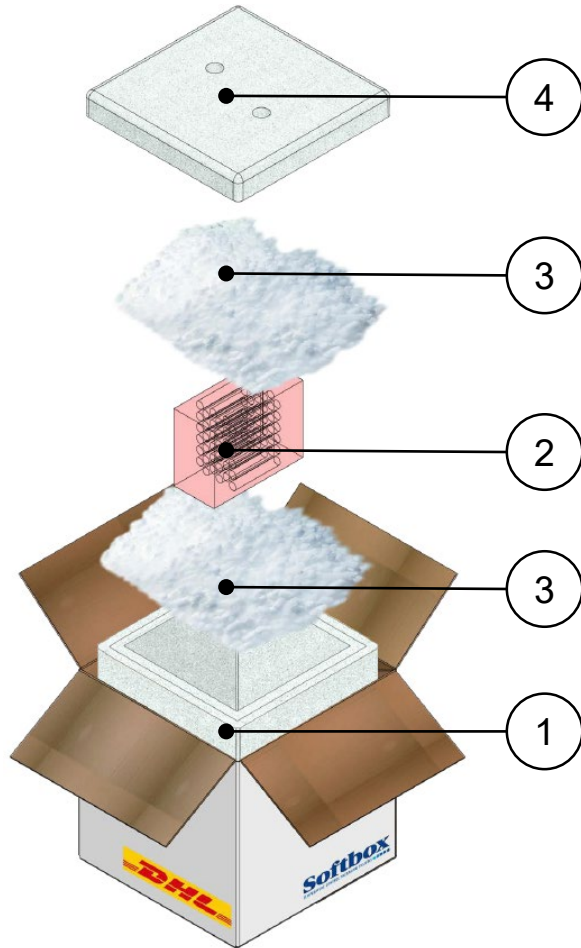
REPORT APPROVER

Gavin Hill
Senior Project Engineer

Signature:

Date: 20NOV2018

SYSTEM DIAGRAM



SYSTEM SPECIFICATION

Item	Components	Quantity	Weights and Dimensions	
1	DHL Frozen Solution Large Base	1	Tare Weight	12.7kg
2	Test Product Load	1	Volumetric Weight	14kg
3	Dry Ice Pellets	11.218kg	Product Dimensions L x W x H	180x145x150mm
4	DHL Frozen Solution Large Lid	1	Shipper Dimensions L x W x H	395x395x448mm

Freezing Media

11.218kg of 16mm dry ice pellets. Approximate pellet weight – 15g.



DHL FROZEN SOLUTION LARGE SYSTEM PACKING INSTRUCTION

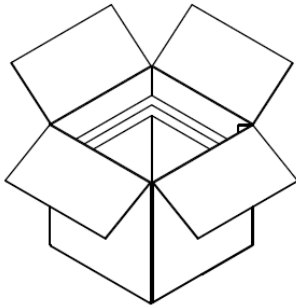


Fig.1
Remove the Frozen Solution lid and prepare to pack.

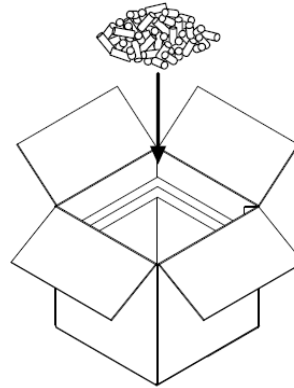


Fig.2
Place a minimum 2 pellet layer of dry ice in the base of the Frozen Solution.

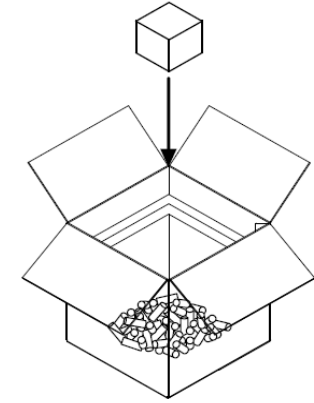


Fig.3
Place product load on the layer of dry ice pellets.

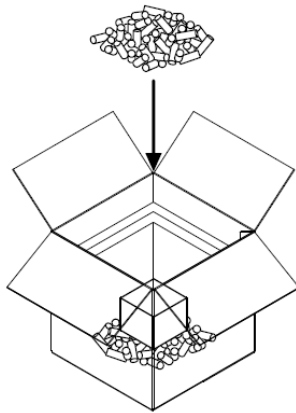


Fig.4
Place dry ice pellets around the product load.

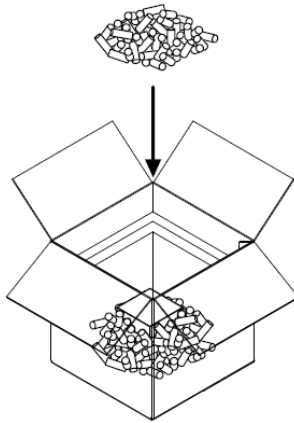


Fig.5
Place the remaining dry ice on the product load.

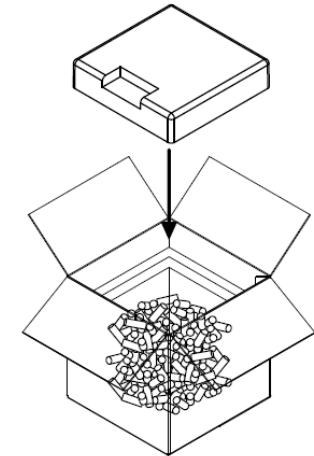


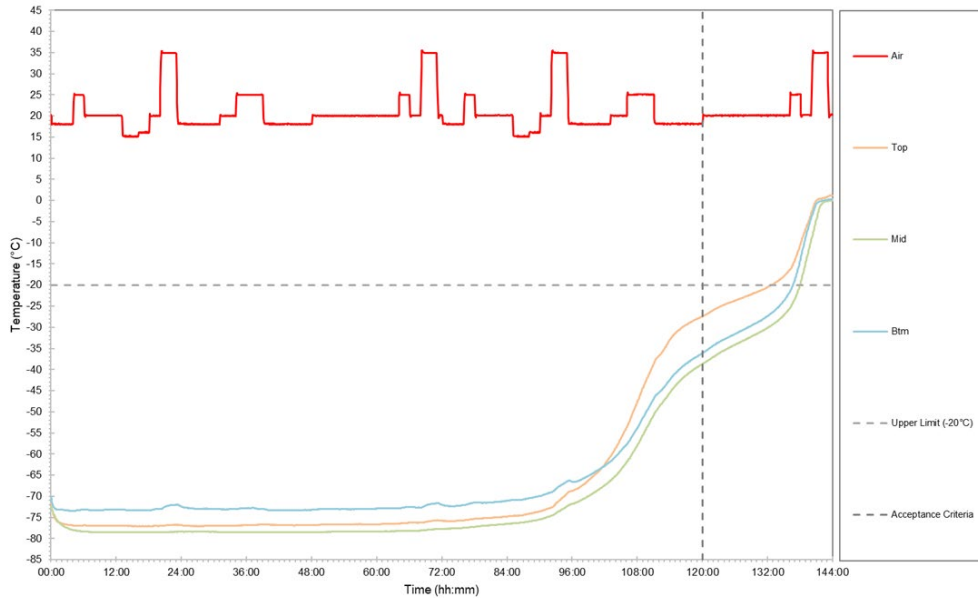
Fig.6
Place the lid on the Frozen Solution and secure outer carton with tape.



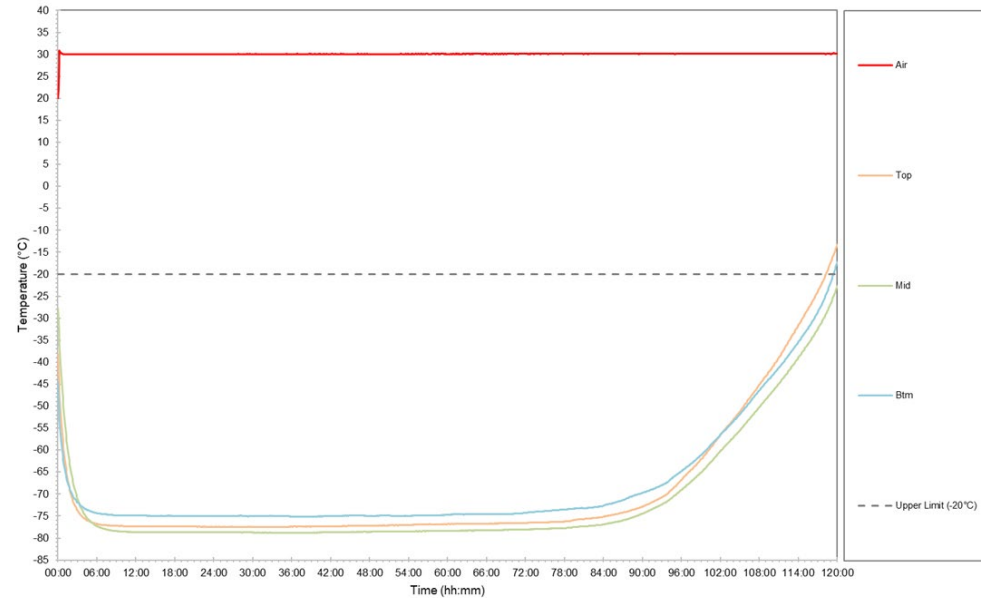
DHL FROZEN SOLUTION LARGE SYSTEM TEST RESULTS – SBS SUMMER & STATIC +30°C



TO 6633



TO 6657



Test Profile	Product Load	Duration Achieved	Minimum Temperature : °C Maximum Temperature : °C
SBS Summer TO 6633	Full Load	132:55 hh:mm	Minimum Temperature : -78.5°C Maximum Temperature : +1.2°C
Static +30°C TO 6657	Full Load	118:20 hh:mm	Minimum Temperature : -78.8°C Maximum Temperature : -13.3°C