



SUMMARY REPORT

DHL COMBI SOLUTION (-20°C)

Dry Ice Pellets

SBS Summer & Static +30°C Ambient Test Profiles

Abstract

The following Summary Report demonstrates how the system is conditioned, packed and performs when tested against the SBS Summer & Static +30°C ambient test profiles.

REPORT AUTHOR

Fraser MacDonald
Packaging Engineer

Signature:

Date: 20NOV2018

REPORT APPROVER

Gavin Hill
Senior Project Engineer

Signature:

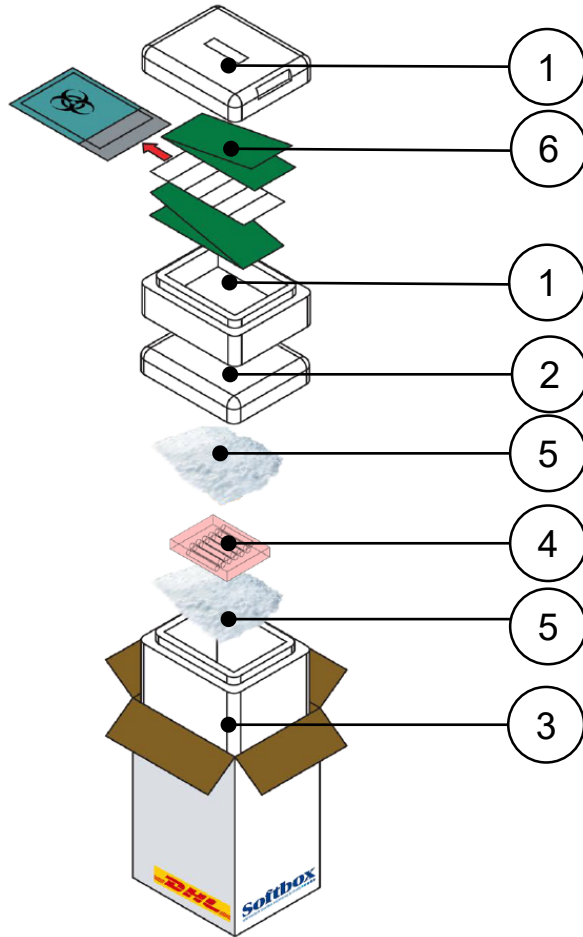
Date: 20NOV2018



DHL COMBI SOLUTION SYSTEM DIAGRAM & SYSTEM SPECIFICATION



SYSTEM DIAGRAM



SYSTEM SPECIFICATION

Item	Components	Quantity	Weights and Dimensions	
1	DHL COMBI AMBIENT SOLUTION	1	Tare Weight	5.2kg
2	DHL COMBI SOLUTION FROZEN Lid	1	Volumetric Weight	6.5kg
3	DHL COMBI SOLUTION FROZEN Base	1	Product Dimensions Frozen L x W x H	202x152x178mm
4	Test Product Load	1	Product Dimensions Ambient L x W x H	202x152x76mm
5	Dry Ice Pellets	4.202kg	Shipper Dimensions L x W x H	295x244x442mm
6	16oz Gel Wraps	N/A		

Freezing Media

4.202kg of 16mm dry ice pellets. Approximate pellet weight – 15g.



DHL COMBI SOLUTION SYSTEM PACKING INSTRUCTION

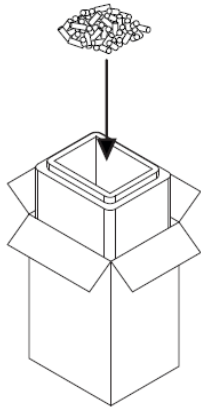


Fig.1
Place a minimum 2 pellet layer of dry ice covering the base of the Frozen Solution.

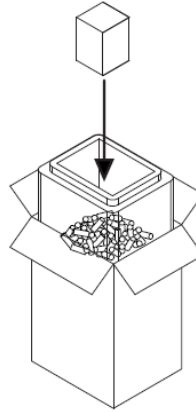


Fig.2
Place product load on the layer of dry ice pellets.

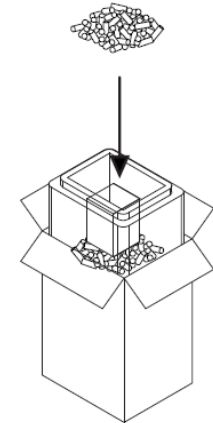


Fig.3
Place dry ice pellets around the product load.

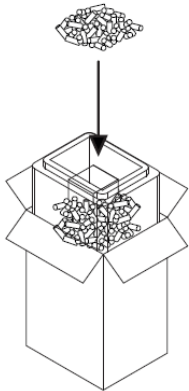


Fig.4
Place the remaining dry ice on the product load.

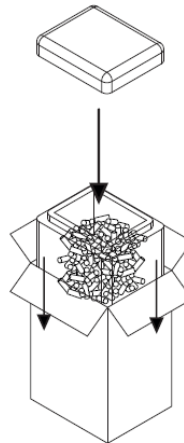


Fig.5
Place the lid on the Frozen Solution and push to the bottom of the outer carton.

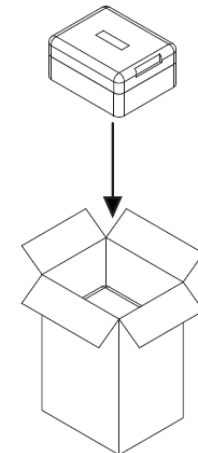


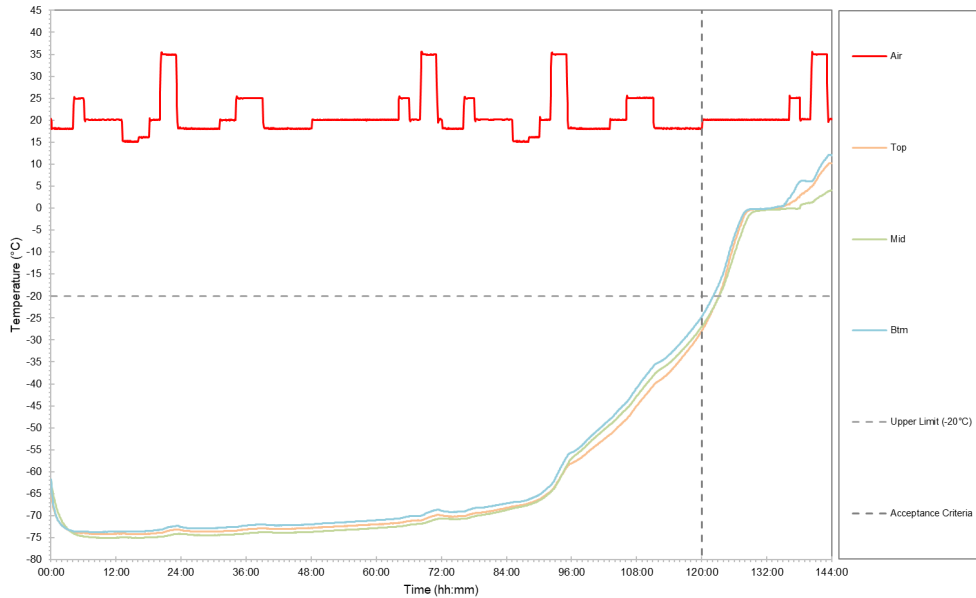
Fig.6
Place the ambient shipper on top and secure the outer carton with tape.



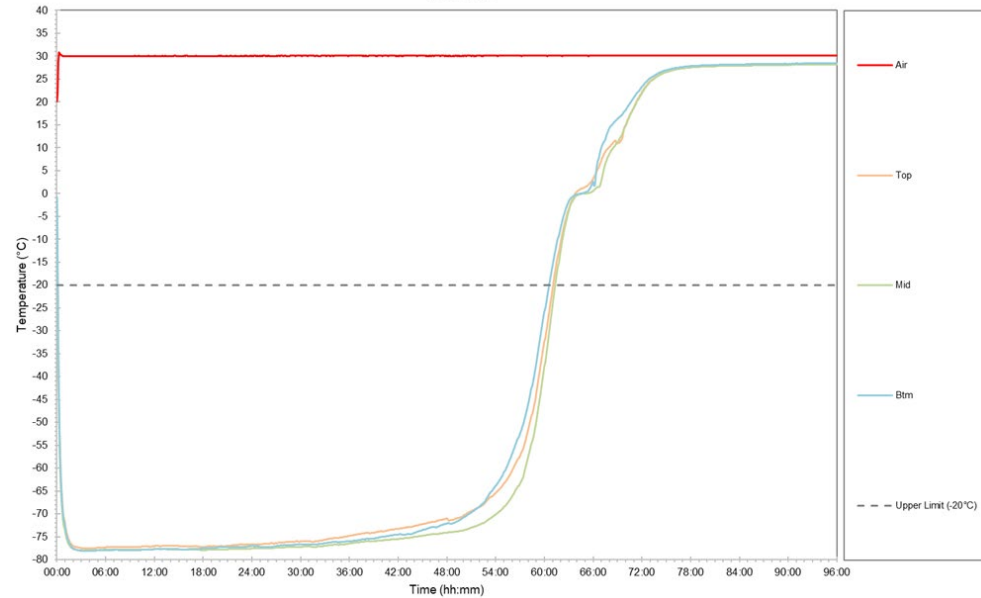
DHL COMBI SOLUTION SYSTEM TEST RESULTS – SBS SUMMER & STATIC +30°C



TO 6634



TO 6659



Test Profile	Product Load	Duration Achieved	Minimum Temperature : °C Maximum Temperature : °C
SBS Summer TO 6635	Full Load	76:35 hh:mm	Minimum Temperature : -78.8°C Maximum Temperature : +25.7°C
Static +30°C TO 6659	Full Load	60:35 hh:mm	Minimum Temperature : -78.1°C Maximum Temperature : +28.4°C